

**AP MORGAN**



**Dixon Close, Enfield, Redditch**  
Offers in the region of £140,000



**Features:**

- Top-floor apartment
- Convenient location near town centre
- Allocated parking space
- Spacious lounge/diner & fitted kitchen
- Two double bedrooms
- Family bathroom
- Juliete style balcony
- Pleasant communal gardens & play area

**Description:**

Introducing this well-presented top floor apartment offering two bedrooms, a well-fit kitchen and a great view of the surrounding areas located in Enfield, Redditch.

On arrival, you are presented with a modern residential development providing you with an allocated parking space as well as great communal gardens with a children's play area.

On entry, you will head up to the top floor and into the apartment which initially takes you through the hallway occupying two storage cupboards leading into the lounge/diner offering plenty of space for comfort and convenience, as well as doors opening onto the Juliete style balcony showcasing the wonderful views of the communal garden and the nearby areas of Enfield. The lounge also leads into the kitchen, fit with plenty of storage cupboards, an integrated oven and electric hob with extractor hood and an integrated fridge/freezer. Leading from the hallway are the two double bedrooms, one supplying a built-in sliding door wardrobe for ample storage, as well as the family bathroom with a toilet, wash basin and bathtub with overhead shower.

This well-presented apartment is situated within close proximity to the town centre facilities, railway station, Kingfisher shopping centre, leisure centre, local supermarkets and close links to the M42 and M5 motorways.



**Details:**

**Entrance Hallway**

**Lounge/Diner** 20'6" (6.25m)

**Master Bedroom** 12'6" (3.8m)

**Bedroom Two** 8'9" x 8'4" (2.67m x 2.54m)

**Family Bathroom** 6'8" x 5'6" (2.03m x 1.68m)

**EPC Rating:** C

**Council Tax Band:** B (tbc by solicitors).

**Tenure:** To be advised (tbc by solicitors).

For more information or to arrange a viewing, please call us on 01527 406 956.





How can we help you?

Need a mortgage?

We recommend Wisser Mortgage Advice. They will search the market for you to ensure you get the right lender and mortgage deal. They typically achieve mortgage offers much more quickly than if you were dealing with lenders directly. The initial appointment is free and without obligation. Call us on 01527 406 956, or visit their website for more information: [www.wissermortgageadvice.co.uk](http://www.wissermortgageadvice.co.uk)

Property to sell?

If you need to sell a property in order to buy, you ideally need to be on the market at least (and preferably Sold STC) before viewing, otherwise you may lose out to other buyers when the right property comes along. In these circumstances we can get your property 'live' quickly. Just book a free valuation and we will visit your property and discuss your needs.

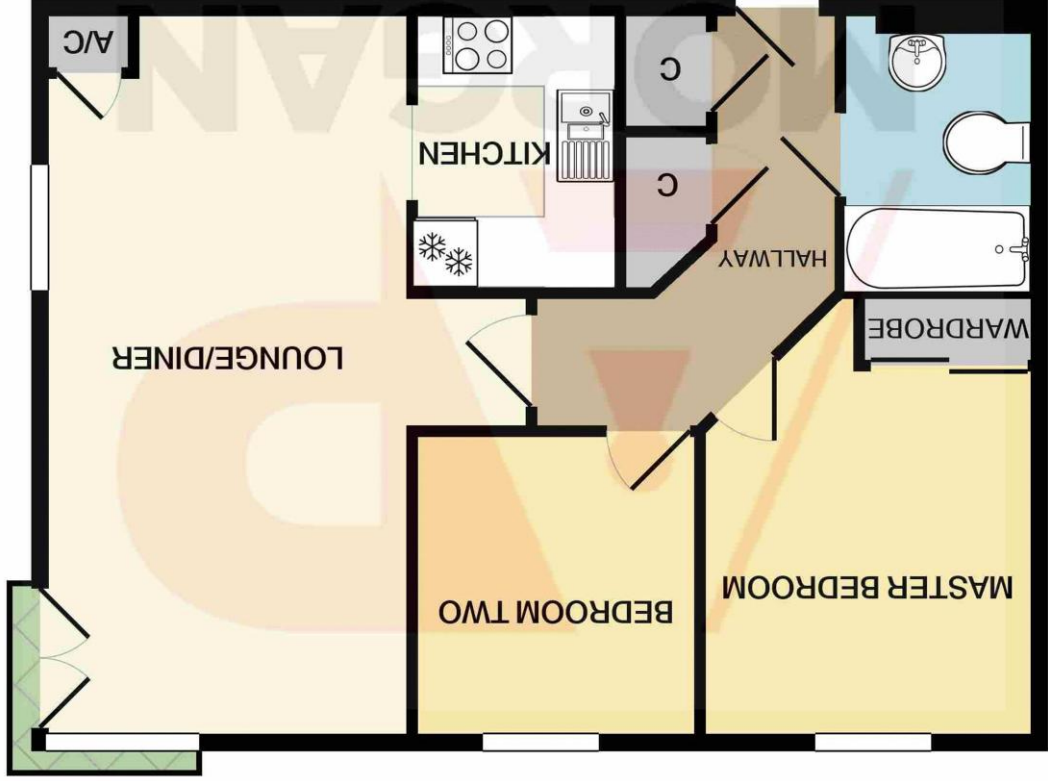
Need a solicitor?

A good solicitor can save you literally weeks of time in the buying/selling process, reducing the stress levels of all involved. We will instruct a reputable firm that is competitive on cost and very reliable. Just ask for a quote.

Identity Checks

Estate Agents are required by law to conduct anti-money laundering checks on all those buying a property. We have partnered with a third party supplier to undertake these who will contact you once you have had an offer accepted on a property you wish to buy. The cost of these checks is £39 + VAT per buyer and this is a non-refundable fee. These charges cover the cost of obtaining relevant data, any manual checks and monitoring which might be required. This fee will need to be paid and the checks completed in advance of the issuing of a memorandum of sale on the property you would like to buy.

No statement in these details is to be relied upon as representation of fact, and purchasers should satisfy themselves by inspection or otherwise as to the accuracy of the statements contained within. These details do not constitute any part of any offer or contract. AP Morgan and their employees and agents do not have any warranty or representation whatsoever in respect of this property. These details and all statements herein are provided without any responsibility on the part of AP Morgan or the vendors. Equipment: AP Morgan has not tested the equipment or central heating system mentioned in these particulars and the purchasers are advised to satisfy themselves as to the working order and condition. Measurements: Great care is taken when measuring, but measurements should not be relied upon for ordering carpets, equipment, etc. The Laws of Copyright protect this material. AP Morgan is the Owner of the copyright. This property sheet forms part of our database and is protected by the database right and copyright laws. No unauthorised copying or distribution without permission.



TOTAL APPROX. FLOOR AREA 574 SQ.FT. (53.3 SQ.M.)

Whilst every attempt has been made to ensure the accuracy of the floor plan contained here, measurements of doors, windows, rooms and any other items are approximate and no responsibility is taken for any error, omission, or mis-statement. This plan is for illustrative purposes only and should be used as such by any prospective purchaser. The services, systems and appliances shown have not been tested and no guarantee as to their operability or efficiency can be given  
Made with Metropix ©2020